

P2381Y-C6

23.8" PCAP Panel PC

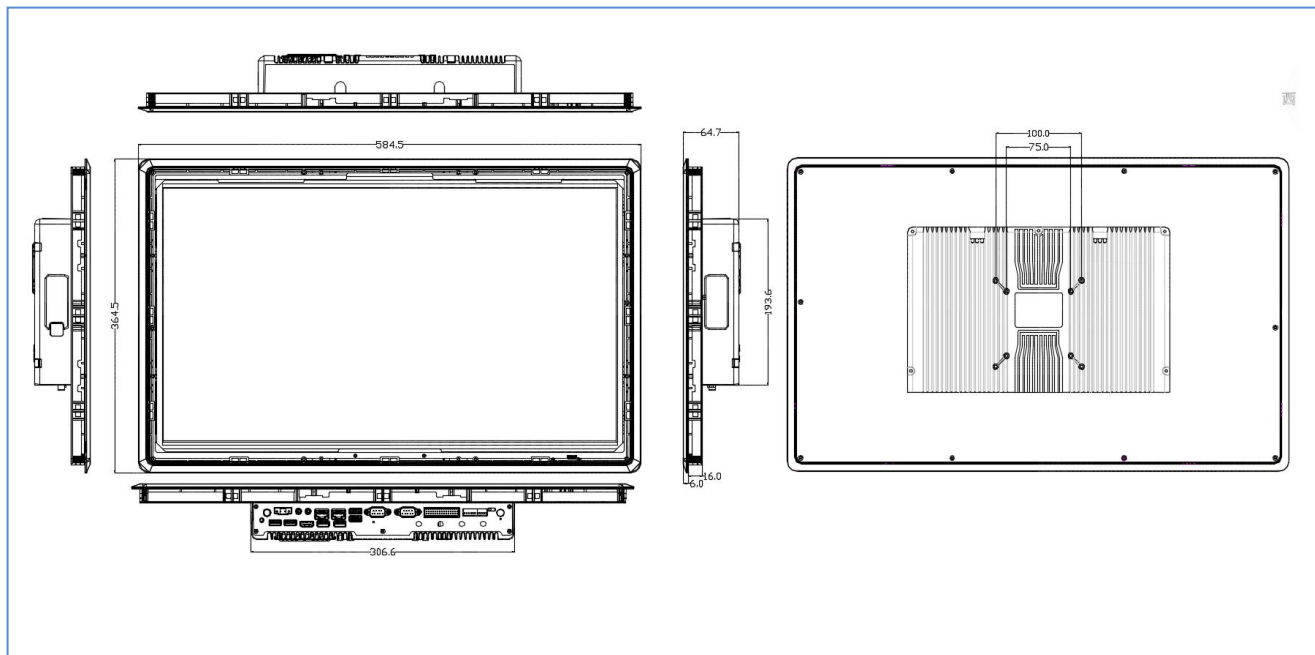


Features

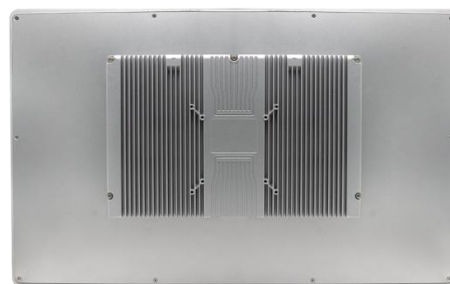
- 23.8"LCD, 1920*1080, 16:9, capacitive touch screen
- Onboard Intel J6412/7300U/8260U/10210U/1135G7/1235U quad cores CPU
- 2*SODIMM DDR4-2400 RAM slot, up to 32GB
- 1*HD OUTPUT
- 2*Intel I210
- 6*RS232, COM1~2 DB9 RS232, COM2 RS485/422, COM3~6 RS232 on 2*15P Phoenix connector, COM3 RS485 selectable
- 4-in 4-out GPIO,4*USB3.0, 2*USB2.0
- 9~36V wide voltage input
- Aluminum case, fanless design

Model No.	P2381Y-C6 V1.0	
Case	Material/Structure	Aluminum case, fanless design
	Color	Silver
	Dimension	L537*W365*H65mm
	Net Weight	8.5KG
	Installation	VESA mount / embedded
LCD Screen	Type	23.8" LCD, 16:9 wide screen
	Resolution	1920 * 1080
	Luminance	300 cd/m ²
Touch Screen	Type	Capacitive, 10 point touch (resistive screen optional)
	Light Transmission	>86%
Mainboard	CPU	Onboard Intel J6412/7300U/8260U/10210U/1135G7/1235U quad core 4-thread processor, TDP 10W
	Memory	2*DDR4-2400 SODIMM RAM slot, up to 32GB
IO Port	POWER	1*Power button, 1*One-key recovery (reset key optional), 1*ACLOSS (auto power ON/OFF)
	LED	1*Power LED, 1* HDD LED
	Display	1*HD OUTPUT
	LAN	2*Intel I210 Gigabit Ethernet, support Wake On LAN、PXE
	USB	4*USB3.0, 2*USB2.0
	COM	6*RS232, COM1~2 DB9 RS232, COM2 RS485/422 selectable, COM3-6 RS232 on 2*15pin Phoenix connector, COM3 RS485 selectable, COM1-2 support pin9 charging function
	Phoenix Connector	2*15Pin(4-in 4-out GPIO, 1*power signal/ 4*COM(RS232, 1*RS485), VCC, GND)
	DIP switch	10-digit DIP switch for COM2~3 RS232/485 selection
	Audio	1*Line out, 1*MIC
	Power	1*DC aviation port, 1*2Pin Phoenix connector, support DC9~36V voltage input
Storage	SATA	1*2.5" SATA port
	M.2	1*M.2/SSD, support Key-M, 2280, NVME PCIe4 SSD
	MSATA	1*MSATA
Expansion	M.2	1*M.2/WiFi, Key-E, 2230, support WiFi module
		1*M.2/5G, Key-B, 2242/52, support 5G module
OS Support	Windows	Windows 10
	Linux	Ubuntu
	Watch Dog	Support hardware reset function (L256, 0~255 seconds)
Power Supply	Power Type	External power supply
	Voltage Input	9V~36V
	Rate Consumption	60W~180W
Environment	Operating Temp.	-10°C ~ 50°C
	Storage Temp.	-20°C ~ 70°C
	Relative Humidity	5%-95% relative humidity, non-condensing
	Vibration	0.5g rms/5-500HZ/random/operating

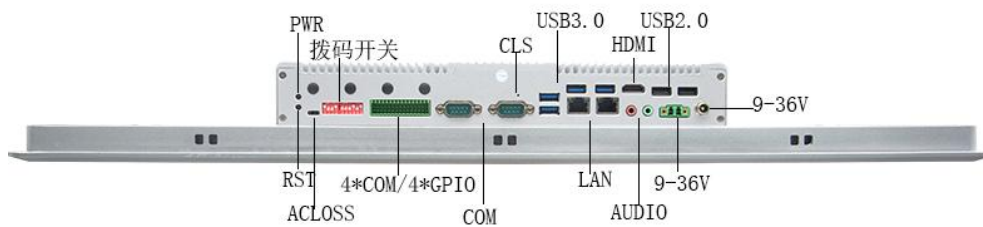
P2381Y-C6 Dimension



Front View



Rear View



Bottom I/O View

Order Information

No.	Model	CPU	Memory	Motherboard	IO Board	GPIO	LAN	COM	HD OUTPUT	USB2.0	USB3.0	power
1	P2381Y-C6 V1.0(J6412)	J6412/2.00G	2*SODDDR4	P641	P1081-C6/P1071-IO/P1071-LED	4-in 4-out	2	6	1	2	4	9~36V
2	P2381Y-C6 V1.0(8260U)	I5-8260U/1.6G	2*SODDDR4	P82	P1082-C6/P1071-IO/P1071-LED	4-in 4-out	2	6	1	2	4	9~36V
3	P2381Y-C6 V1.0(7300U)	I5-7300U/2.6G	2*SODDDR4	P68	P1082-C6/P1071-IO/P1071-LED	4-in 4-out	2	6	1	2	4	9~36V
4	P2381Y-C6 V1.0(10210U)	I5-10210U/1.6G	2*SODDDR4	P102	P1082-C6/P1071-IO/P1071-LED	4-in 4-out	2	6	1	2	4	9~36V
5	P2381Y-C6 V1.0(1135G7)	I5-1135G7/2.4G	2*SODDDR4	P112	P1082-C6/P1071-IO/P1071-LED	4-in 4-out	2	6	1	2	4	9~36V
6	P2381Y-C6 V1.0(1165G7)	I7-1135G7/2.8G	2*SODDDR4	P112	P1082-C6/P1071-IO/P1071-LED	4-in 4-out	2	6	1	2	4	9~36V

NOTE: 1、one-key recovery / reset optional, default one-key recovery
 2、Fan cooling version is P2381F-C6 / P2381F-P4

7	P2381Y-P4 V1.0(J6412)	J6412/2.00G	2*SODDDR4	P641	P1081-P4/P177-IO/P1071-LED	4-in 4-out	5	4	1	2	2	9~36V
8	P2381Y-P4 V1.0(8260U)	I5-8260U/1.6G	2*SODDDR4	P82	P1082-P4/P177-IO/P1071-LED	4-in 4-out	5	4	1	2	2	9~36V
9	P2381Y-P4 V1.0(7300U)	I5-7300U/2.6G	2*SODDDR4	P68	P1082-P4/P177-IO/P1071-LED	4-in 4-out	5	4	1	2	2	9~36V
10	P2381Y-P4 V1.0(10210U)	I5-1021U/1.6G	2*SODDDR4	P102	P1082-P4/P177-IO/P1071-LED	4-in 4-out	5	4	1	2	2	9~36V
11	P2381Y-P4 V1.0(1135G7)	I5-1135G7/2.4G	2*SODDDR4	P112	P1082-P4/P1071-IO/P1071-LED	4-in 4-out	2	6	1	2	4	9~36V
12	P2381Y-P4 V1.0(1165G7)	I7-1165G7/2.8G	2*SODDDR4	P112	P1082-P4/P1071-IO/P1071-LED	4-in 4-out	2	6	1	2	4	9~36V